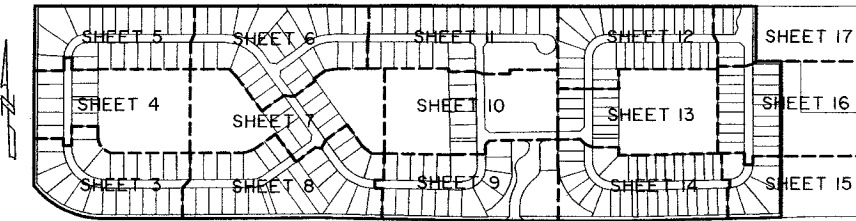


# CASTELLINA

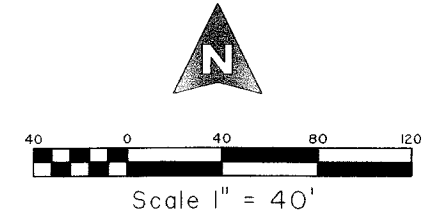
LYING IN SECTION 13, TOWNSHIP 44 SOUTH, RANGE 41 EAST, VILLAGE OF WELLINGTON, PALM BEACH COUNTY, FLORIDA. BEING A REPLAT OF A PORTION OF LANIER PROPERTY AS RECORDED IN PLAT BOOK 108, PAGES 75 THROUGH 91, PUBLIC RECORDS OF PALM BEACH COUNTY, FLORIDA.

SHEET 4 OF 17

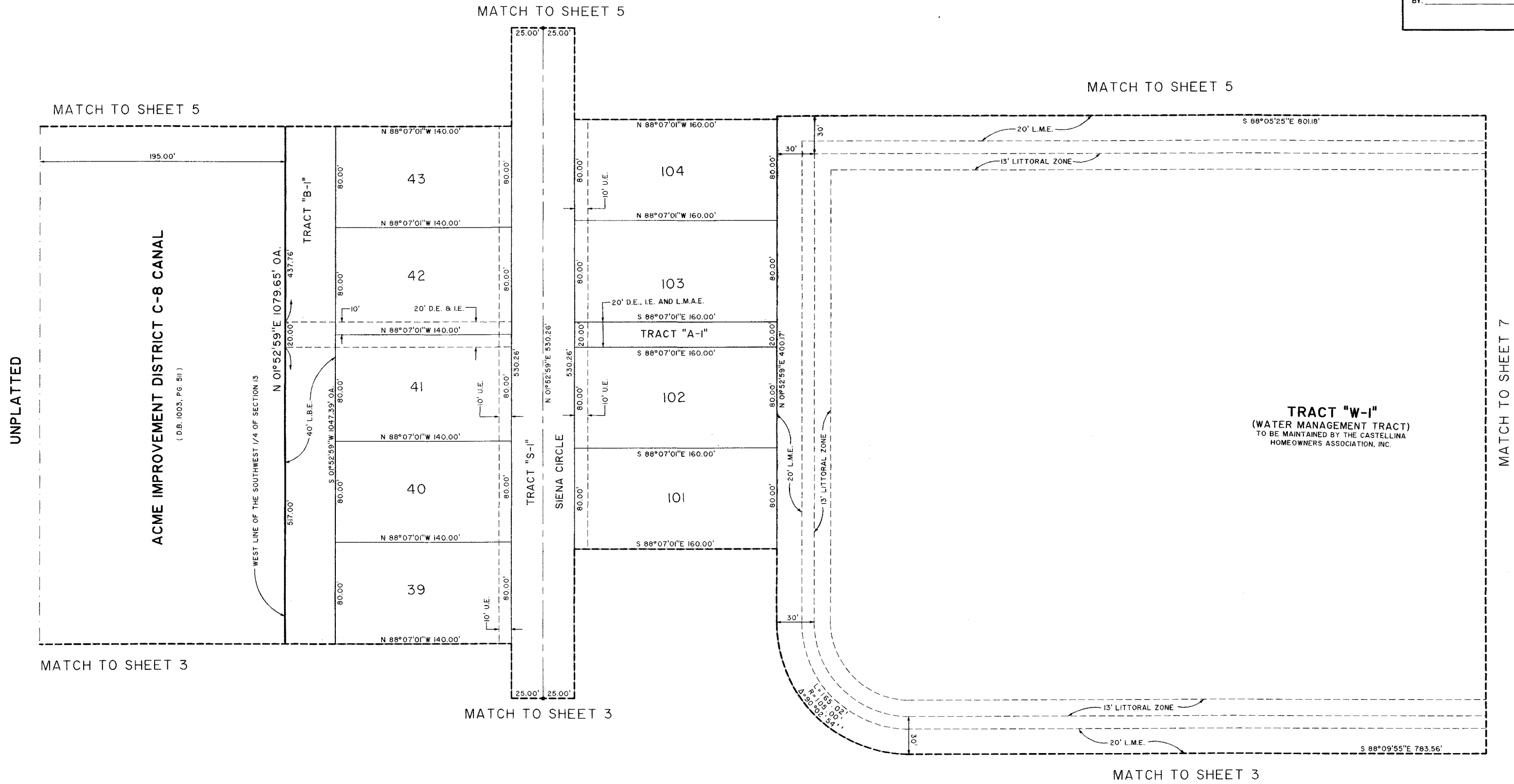
FEBRUARY, 2012



KEY MAP  
NOT TO SCALE



COUNTY OF PALM BEACH )  
STATE OF FLORIDA ) SS  
THIS PLAT WAS FILED FOR RECORD  
AT \_\_\_\_\_ M. THIS \_\_\_\_\_ 2012, AND  
DULY RECORDED IN PLAT BOOK NO. \_\_\_\_\_  
ON PAGE \_\_\_\_\_ THRU \_\_\_\_\_  
SHARON R. BOCK,  
CLERK AND COMPTROLLER  
BY: \_\_\_\_\_, D.C.



UNPLATTED

ACME IMPROVEMENT DISTRICT C-8 CANAL  
(D.B. 1003, PG. 511)

TRACT "W-I"  
(WATER MANAGEMENT TRACT)  
TO BE MAINTAINED BY THE CASTELLINA  
HOMEOWNERS ASSOCIATION, INC.

MATCH TO SHEET 7

SHEET 4 OF 17



**MICHAEL B. SCHORAH & ASSOCIATES, INC.**  
1850 FOREST HILL BLVD., SUITE 206  
WEST PALM BEACH, FLORIDA 33406  
EB# 2438 TEL. (561) 968-0080 FAX. (561) 642-0726 LB# 2438

**CASTELLINA**